

U55 OPTIONS

STANDARD EQUIPMENT

Safety system

- Engine start safety system
- Travel motor with disc brake
- Swivel motor with disc brake
- All hydraulic control

Working equipment

- Auxiliary hydraulic circuit 1
- 2 working lights on cab and 1 light on the boom
- Dozer blade with float function
- Thumb bracket and relief valve

Operator's Space

- ROPS/OPG (TOP Guard, Level I) canopy
- Weight-adjustable full suspension seat
- Retractable seat belt
- Hydraulic pilot control levers with wrist rests
- Travel levers with foot pedals
- Two pattern selection system
- Digital panel
- 12V power source
- Cup holder
- Horn

Engine/Fuel system

- Double element air filter
- Auto idling system
- Water separator with drain cock

Undercarriage

- Dozer blade with float
- 400 mm rubber track
- 1 × upper track roller
- 5 double-flange track rollers on each side
- 2-speed travel switch on dozer lever
- 2-speed travel with auto-shift

Hydraulic system

- 3-pump load sensing system
- Pressure accumulator
- Hydraulic pressure checking ports
- Straight travel circuit
- Third line hydraulic return
- Adjustable maximum oil flow on auxiliary hydraulic circuits 1 (and 2)
- Auxiliary switch (AUX1) on right control lever

Others

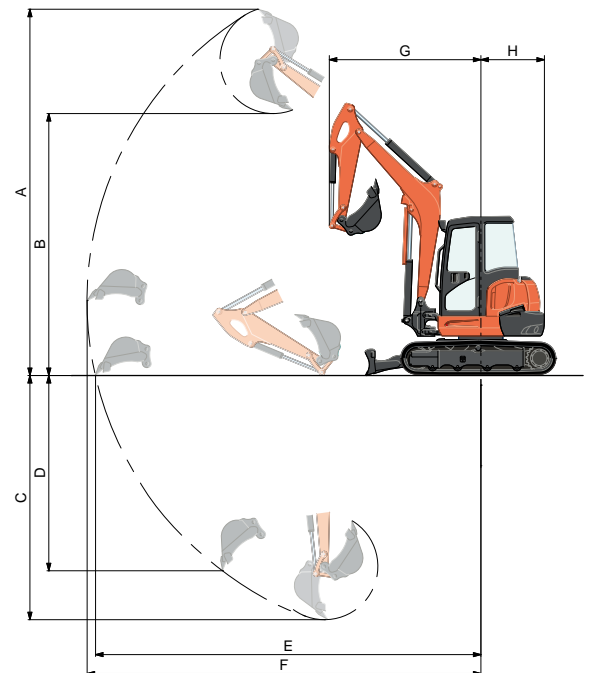
- Tool box
- Grease gun holder

OPTIONAL EQUIPMENT

- Cab with A/C
- Canopy lights
- Rear working lights
- Beacon lights
- 1'3.7" (400 mm) steel track for Angle blade model
- Additional auxiliary hydraulic circuit 2 (adjustable max. oil flow control)
- Angle blade with float function and BOE
- Travel alarm

WORKING RANGE

Model			U55-4
A	Max. digging height	ft. in. (mm)	18'3.7" (5580)
B	Max. dumping height	ft. in. (mm)	13'2.3" (4020)
C	Max. digging depth	ft. in. (mm)	11'10.3" (3615)
D	Max. vertical digging depth	ft. in. (mm)	4'11.6" (1515)
E	Max. digging radius at ground	ft. in. (mm)	19'6.1" (5945)
F	Max. digging radius	ft. in. (mm)	19'11.4" (6080)
G	Min. turning radius	W/O swing ft. in. (mm)	8'0.8" (2460)
		W swing ft. in. (mm)	6'9.9" (2080)
H	Min. tail turning radius	ft. in. (mm)	3'5.1" (1045)

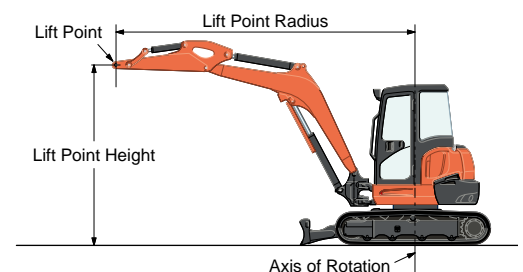


LIFTING CAPACITY

Canopy rubber

LIFT POINT HEIGHT (ft)	LIFTING CAPACITY OVER-FRONT BLADE DOWN unit=1000 lbs				LIFTING CAPACITY OVER-SIDE unit=1000 lbs		
	LIFT POINT RADIUS (ft)			LIFT POINT RADIUS (ft)			
	12	16	MAX	12	16	MAX	
10	2.62	-	-	2.07	-	-	
8	2.92	2.51	2.33	2.01	1.27	1.19	
4	3.70	2.70	2.47	1.85	1.22	1.09	
GL	4.07	2.75	2.57	1.74	1.18	1.11	

Machine with canopy and rubber crawler, without bucket

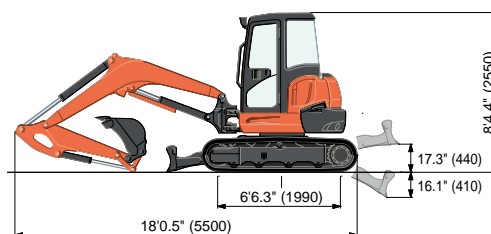
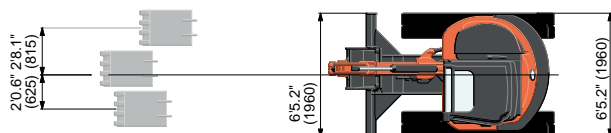


SPECIFICATIONS

Model		U55-4		U55-4 Angle Blade	
Type of ROPS / OPG (TOP Guard, Level I)		Canopy / Cab			
Type of tracks		Rubber		Rubber / Steel	
Engine	Model	V2607-CR-E4			
	Output (SAE J1995 gross)	HP (kW) / rpm		47.6 (35.5) / 2200	
	Output (SAE J1349 net)	HP (kW) / rpm		45.2 (33.7) / 2200	
	Displacement	cu. in. (cc)		159.6 (2615)	
Dimensions	Overall length	ft. in. (mm)		18'0.5" (5500)	
	Overall height	ft. in. (mm)		8'4.4" (2550)	
	Overall width	ft. in. (mm)		6'5.2" (1960)	
	Min. ground clearance	in. (mm)		1'0.2" (310)	
Hydraulic system	Pump capacity	GPM (ℓ/min)		14.8 (56.1) Variable x 2 / 9.8 (37.0) Gear x 1	
	Auxiliary hydraulic flow	AUX1 / AUX2	GPM (ℓ/min)		19.8 (75) / 9.8 (37)
	Max. breakout force	Bucket / Arm	lbs. (kgf)		11177 (5070) / 6261 (2840)
Drive system	Travel speed	Low / High	mph (km/h)		1.8 / 3.1 (2.8 / 4.9)
	Max. traction force	Low speed	lbs. (kgf)		14480 (6567)
	Tumbler distance	ft. in. (mm)		6'6.3" (1990)	
	Crawler length	ft. in. (mm)		8'2.4" (2500)	
	Shoe width	Rubber / Steel	in. (mm)		1'3.7" (400)
	Ground contact pressure	Rubber Canopy / Cab	psi (kgf/cm ²)	4.42 (0.311) / 4.51 (0.317)	4.58 (0.322) / 4.65 (0.317)
	Steel Canopy / Cab	psi (kgf/cm ²)	-	4.66 (0.328) / 4.74 (0.333)	
Swing system	Unit swing speed	rpm		9.3	
	Boom swing angle	Left / Right	degree		70 / 55
Blade	Dimensions	Width	ft. in. (mm)		6'5.2" (1960)
		Height	ft. in. (mm)		1'4.1" (410) / 1'4.7" (425)
	Max. lift above ground	in. (mm)		17.3" (440) / 20.0" (510)	
	Max. drop below ground	in. (mm)		16.1" (410) / 18.3" (465)	
	Angle	Left / Right	degree		- / 25
Hydraulic oil (Reservoir / System)		gal (ℓ)		11.9 (45) / 20.9 (79)	
Fuel reservoir		gal (ℓ)		18.0 (68)	
Operating weight (Including operator's weight @ 175 lbs.)	Rubber Canopy / Cab	lbs. (kgf)		11915 (5405) / 12115 (5495) / 12335 (5595) / 12535 (5685)	
	Steel Canopy / Cab	lbs. (kgf)		- / 12555 (5695) / 12755 (5785)	

The company reserves the right to change the above specifications without notice. This brochure is for descriptive purposes only. Please contact your local Kubota dealer for warranty information. For your safety, Kubota strongly recommends the use of a Rollover Protective Structure (ROPS) and seat belt for almost all applications.

DIMENSIONS



Unit: ft. in. (mm)

©2013 Kubota Corporation



KUBOTA TRACTOR CORPORATION

Kubota Tractor Corporation, 3401 Del Amo Boulevard, Torrance CA 90503
 Western Division: 1175 S. Guild Ave., Lodi, CA 95240 Tel (209) 334-9910
 Central Division: 14855 FAA Boulevard, Fort Worth, TX 76155 Tel (817) 571-0900
 Northern Division: 6300 at One Kubota Way, Groveport, OH 43125 Tel (614) 835-1100
 Southeast Division: 1025 Northbrook Parkway, Suwanee, GA 30024 Tel (770) 995-8855

Visit our web site at: www.kubota.com

